

# Financing Early Childhood Systems for Inclusion

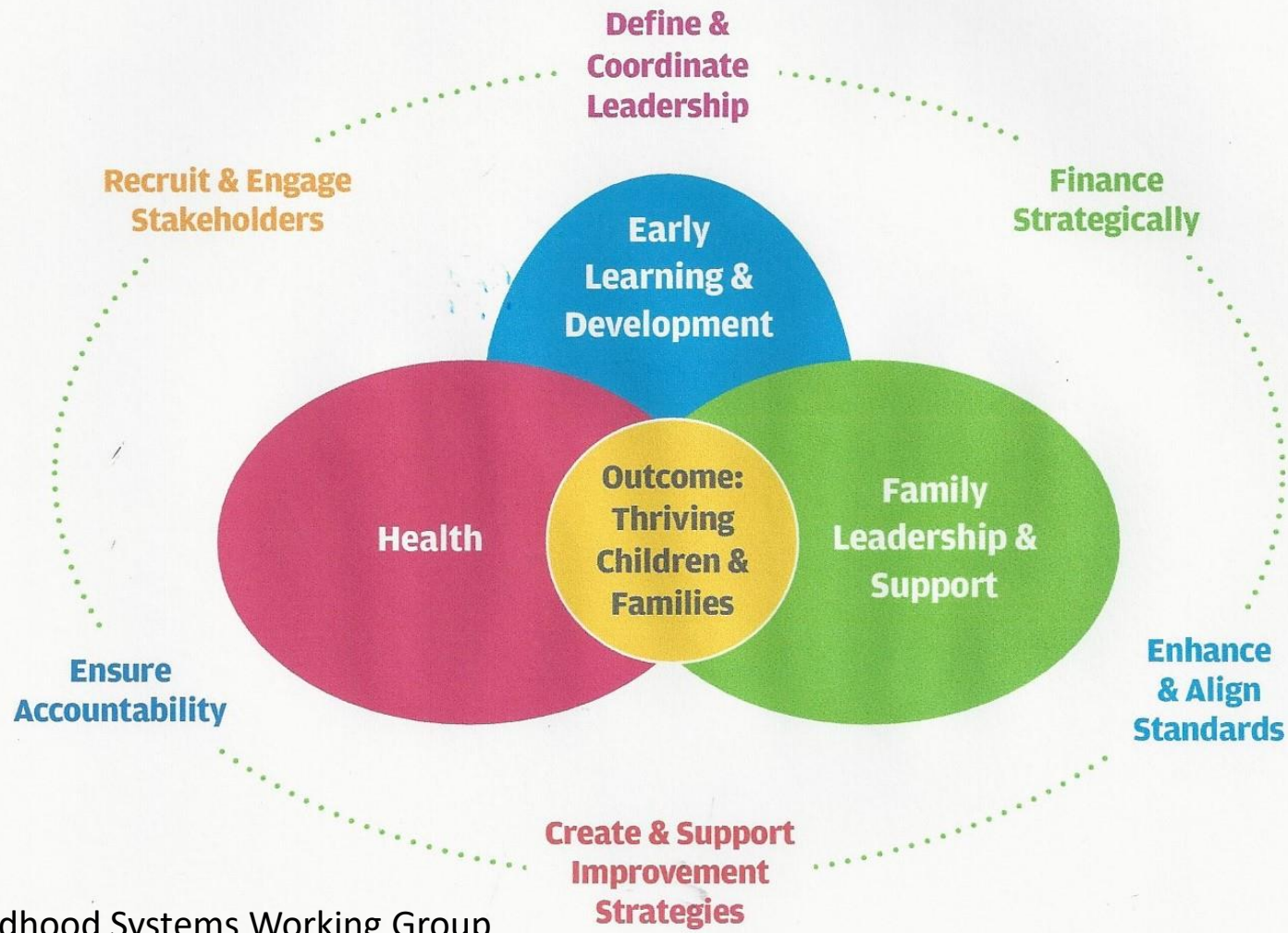
---

Cross-Cohort Leadership  
Institute

September 17-20, 2017



# Early Childhood Systems



Early Childhood Systems Working Group

FINANCING IS  
ALL ABOUT  
BUILDING  
RELATIONSHIPS

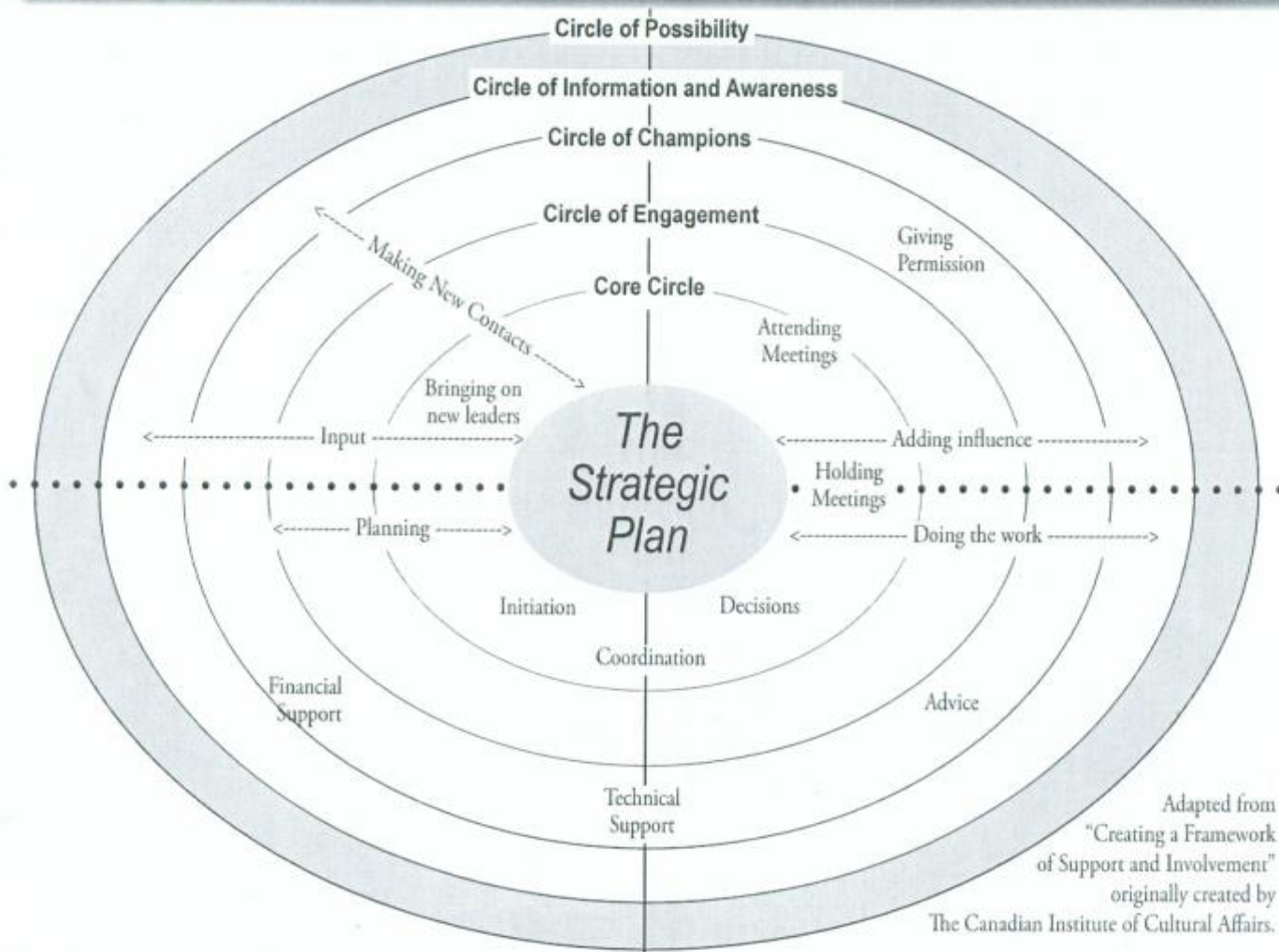


# CIRCLES OF Involvement

- How do you utilize a circle of involvement/ influence to determine key partners and partnerships to impact fiscal policy for state early childhood systems:
  - Who do you know that can strongly influence state policy and funding?
  - Internally
  - Externally
  - Six degrees of separation – Kevin Bacon (connections to others)

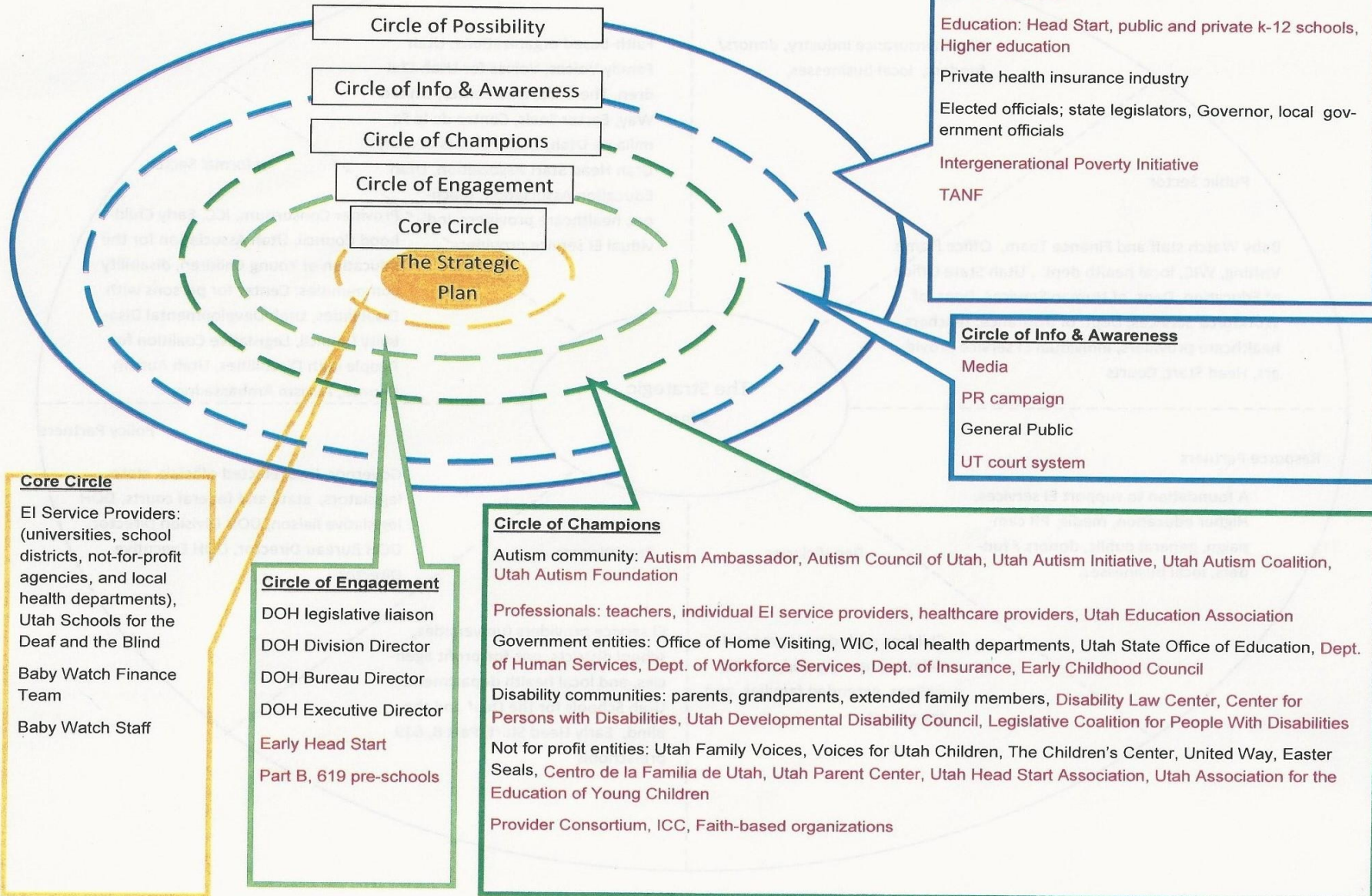
# Circles of Involvement

## Developing Key Relationships for Implementation



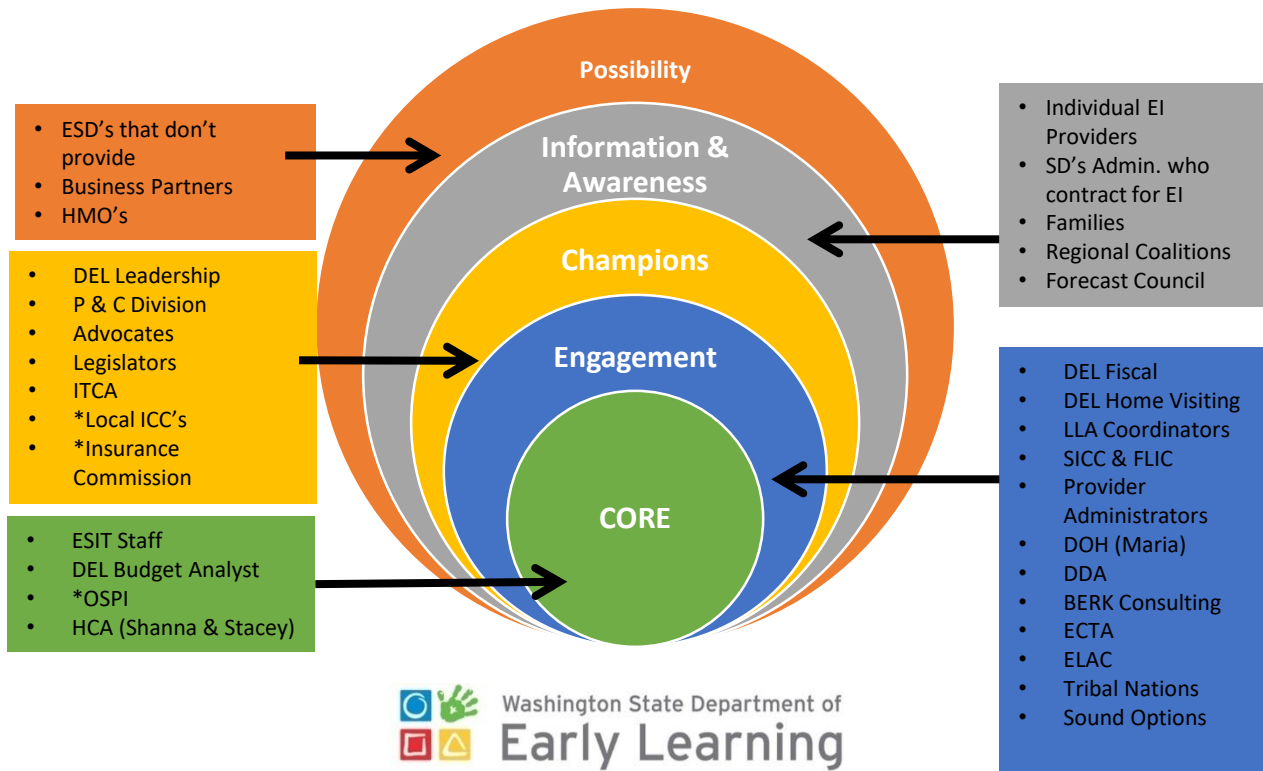
Adapted from  
 "Creating a Framework  
 of Support and Involvement"  
 originally created by  
 The Canadian Institute of Cultural Affairs.

# Circles of Involvement



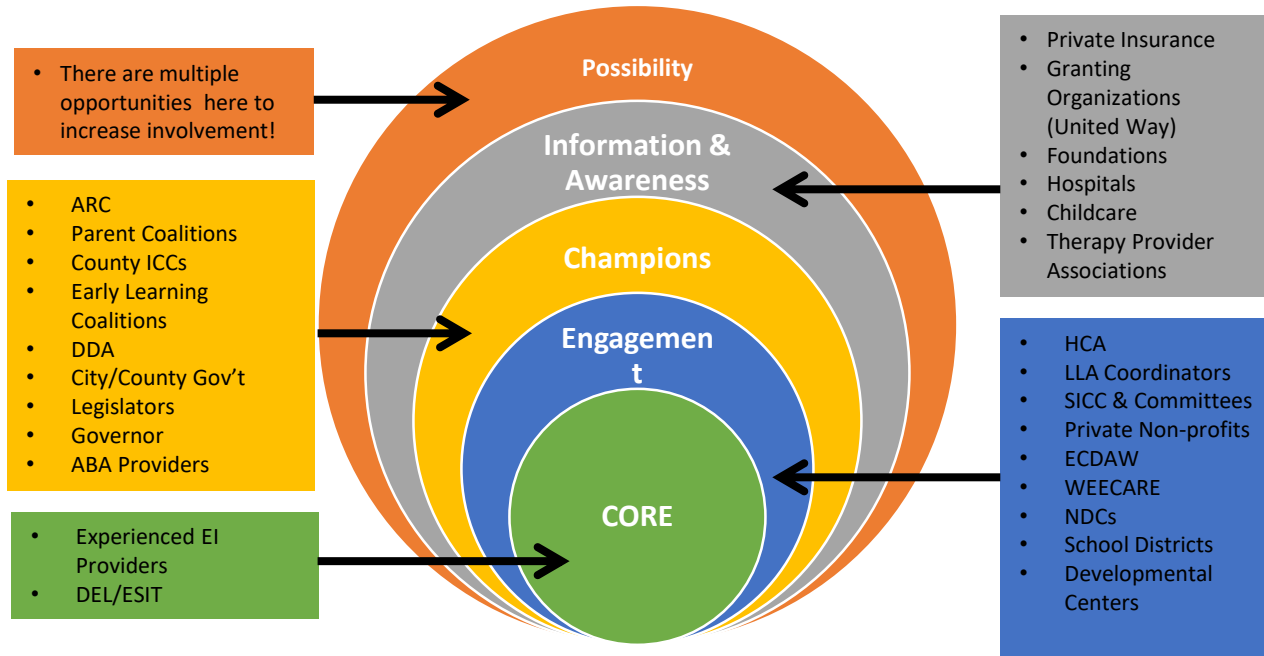
# Circles of Involvement

State Office



# Circles of Involvement

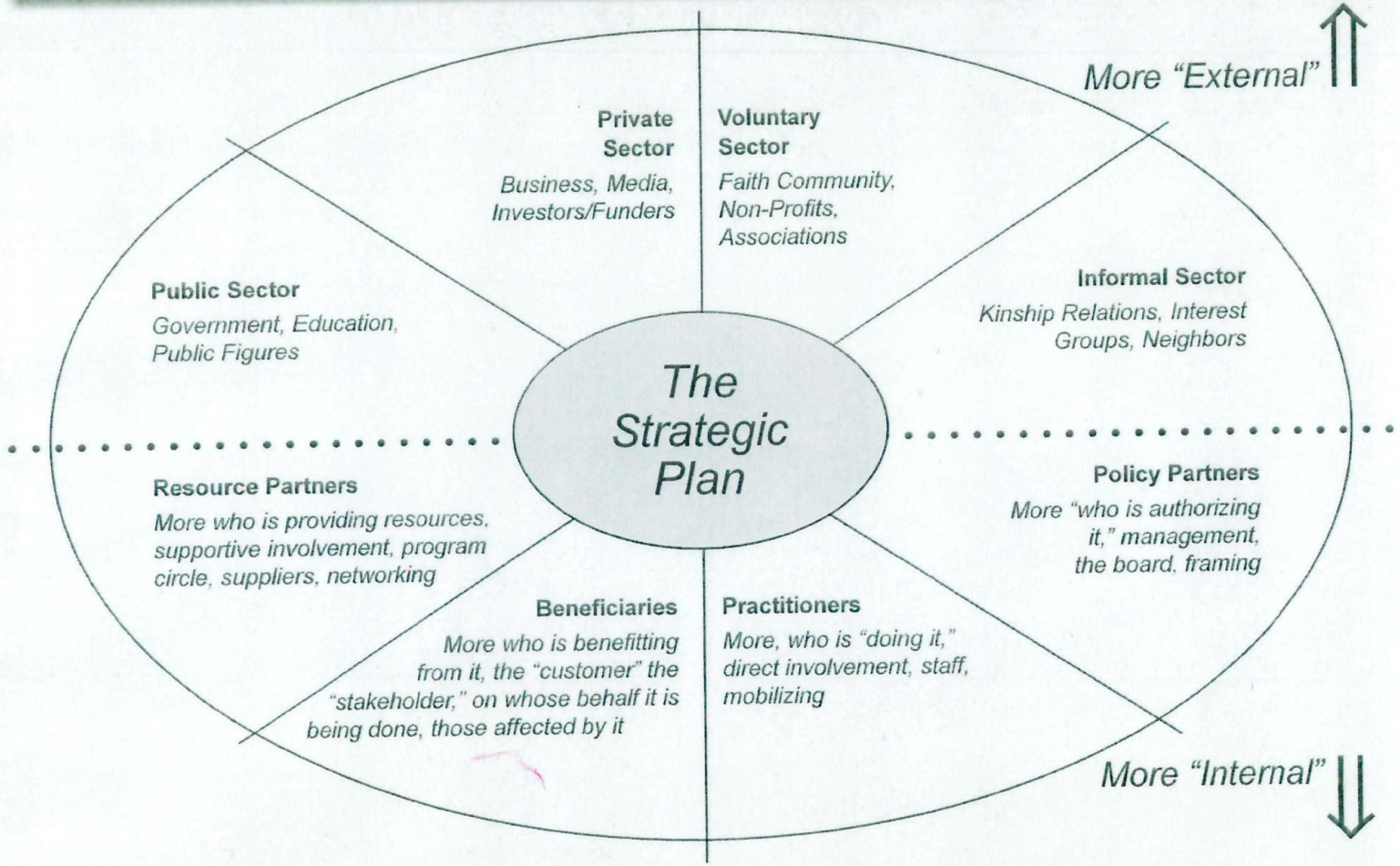
## Providers

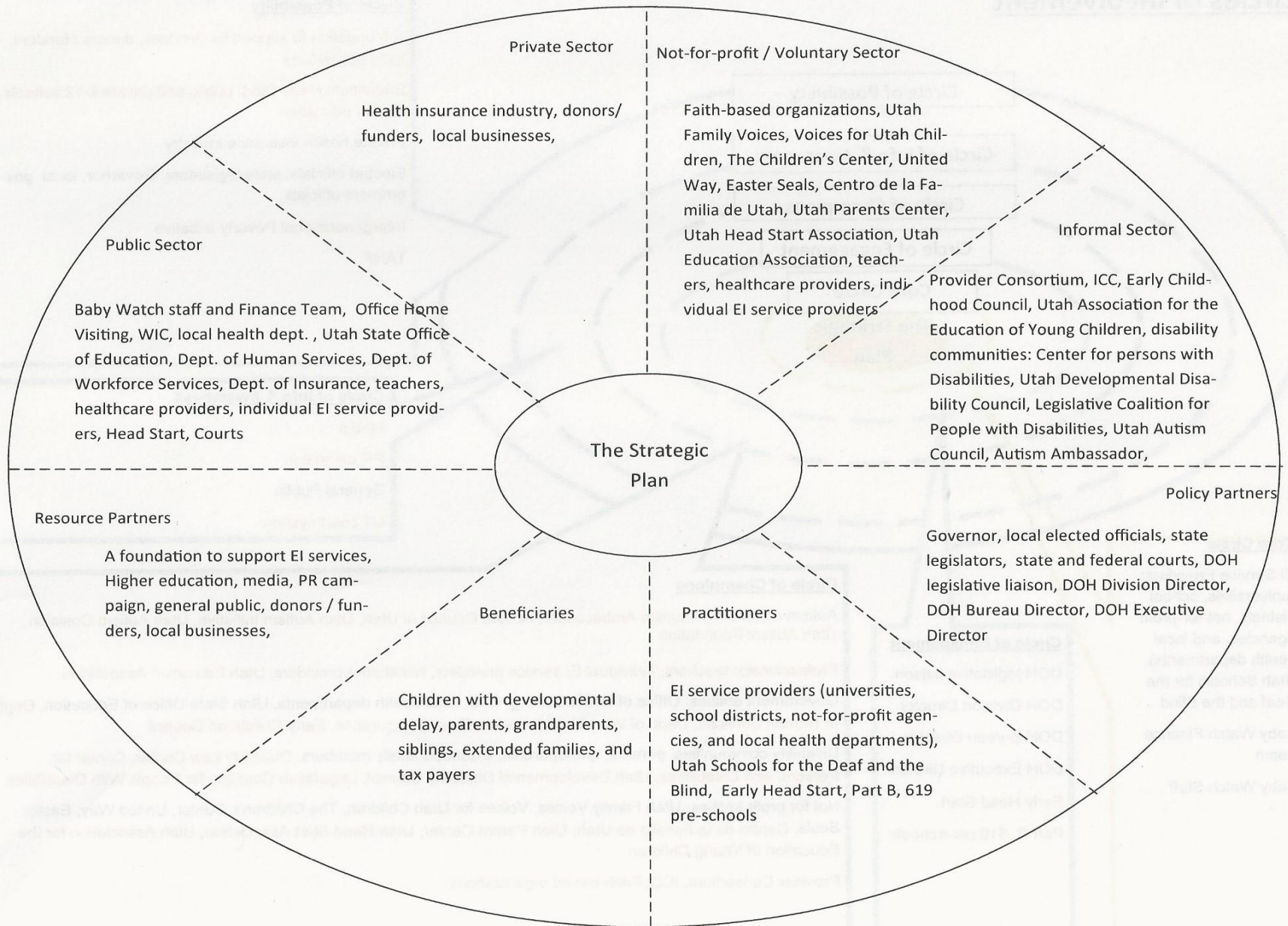


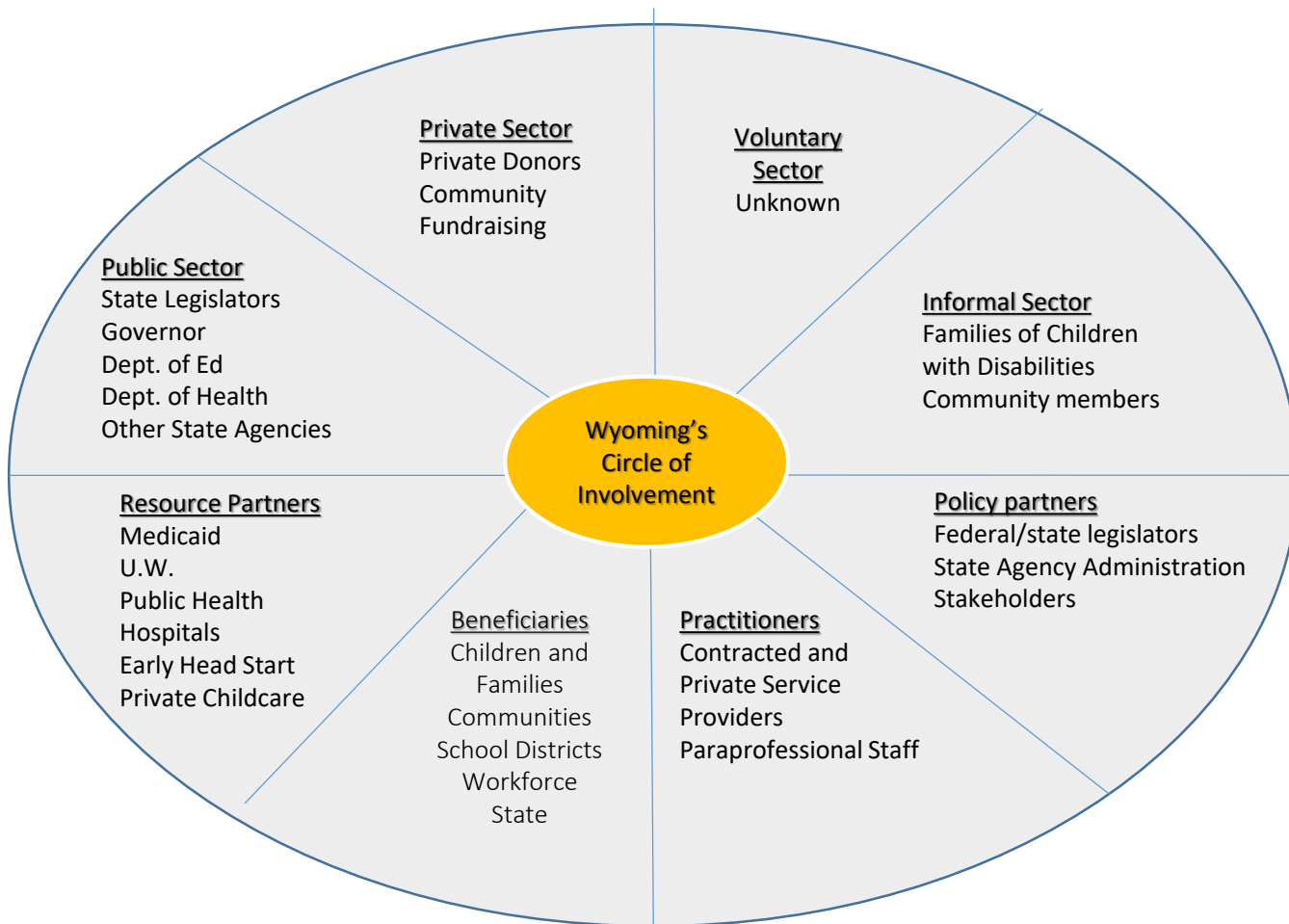


# Circles of Involvement

## Developing Key Relationships for Implementation







FINANCING IS  
ALL ABOUT  
FINDING  
COMMON  
PURPOSE  
AND  
SHARED  
OUTCOMES



# Program or System

- Do you look at Early Childhood Special Education through a programmatic lens or through a system lens?





# What is Collective Impact?



# Collective Impact

- Premise: Large scale social change comes from improved cross-sector coordination rather than from isolated intervention of individual organizations
- A systemic approach that focuses on the relationships between organizations and progress toward shared objectives

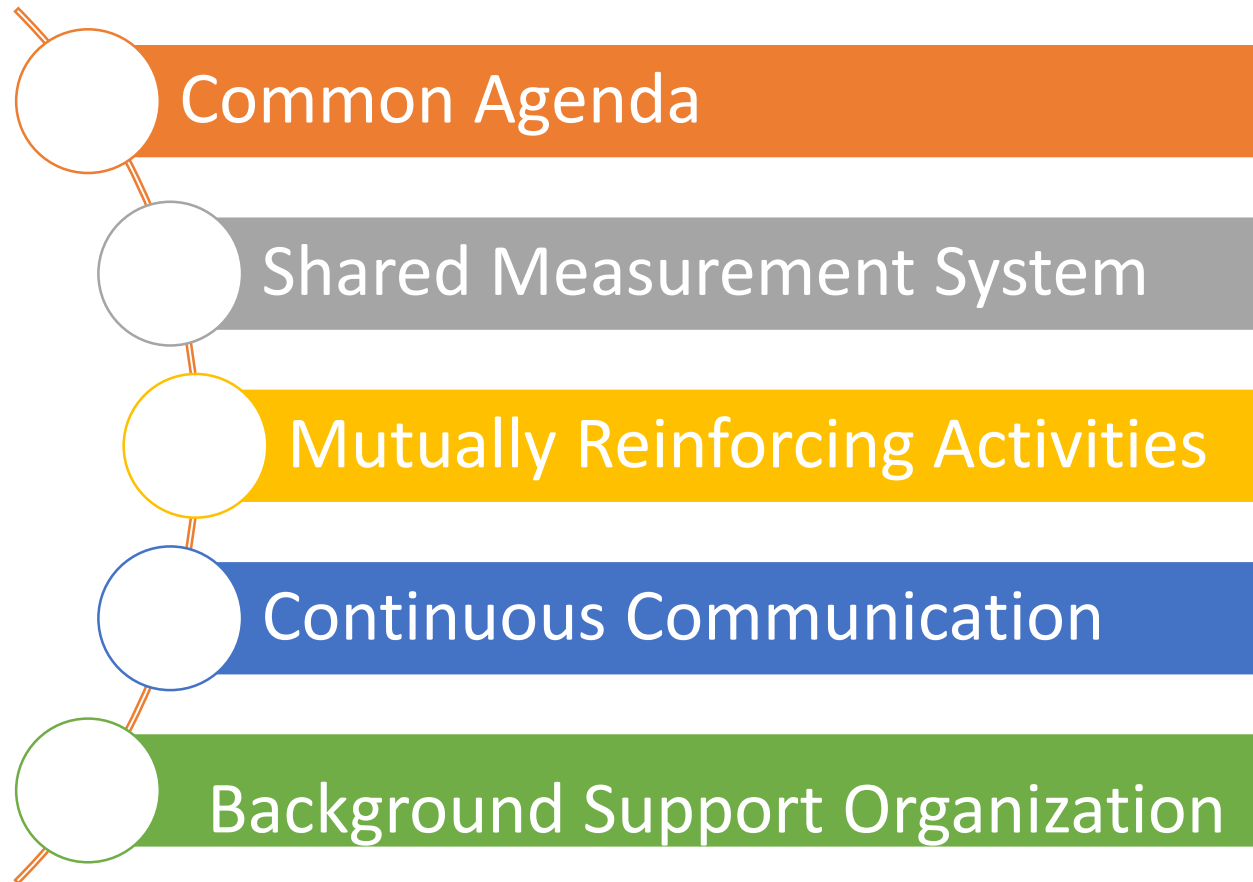


# Collective Impact

- Come together to improve outcomes
- Data used for continuous improvement
- Imbedded in your daily activity
- Advocating for practices that focused are focused on results



# Conditions of Collective Success



# Key to Integrated Funding

- Partnerships and relationships take time
  - Strategic Leadership
- Not a single leader but a collective shared vision
- Identification of common purpose
- Leveraging of resources
- Clearly articulated message that is flexible/relevant to all constituents and their priorities