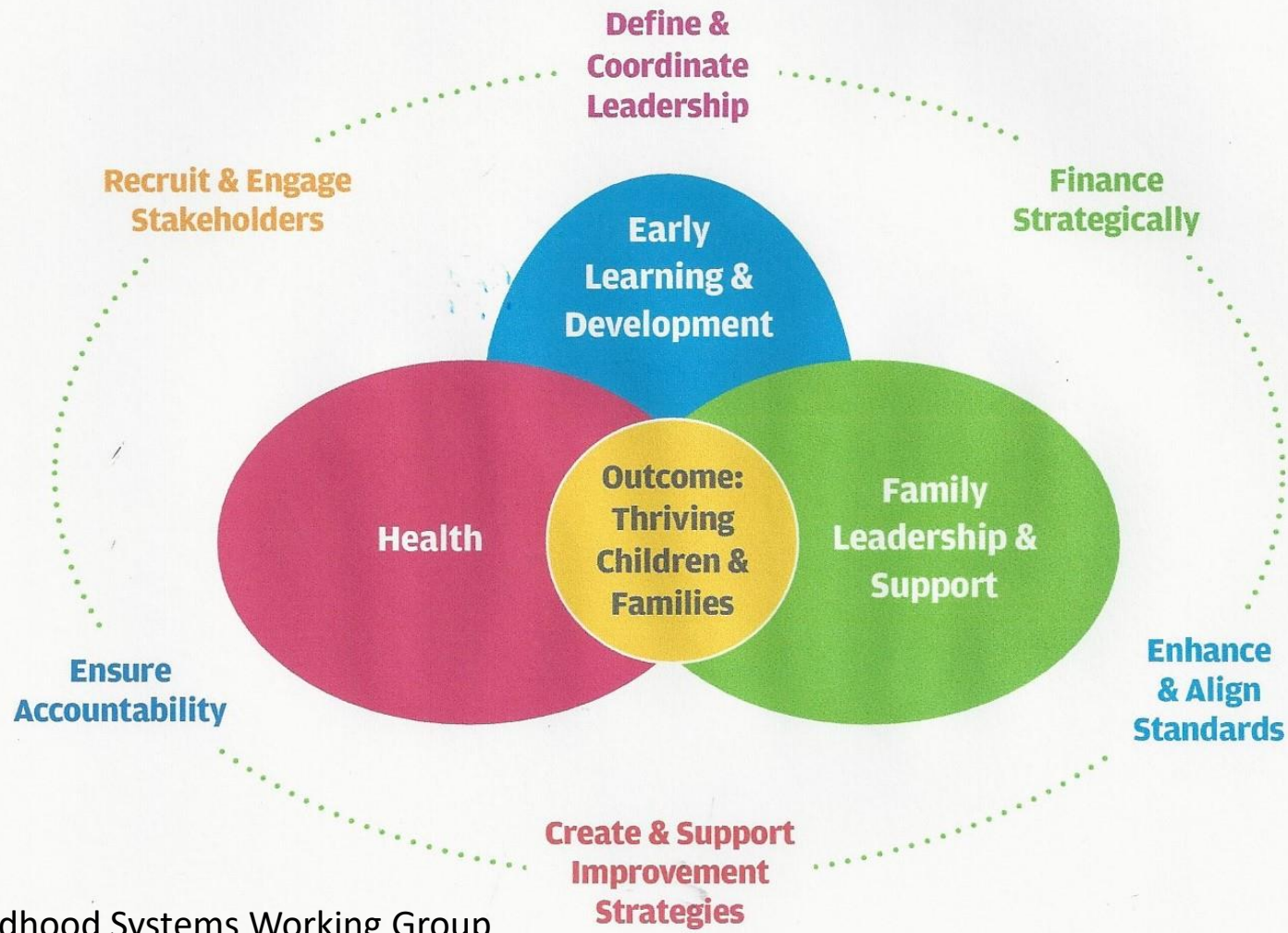


Early Childhood Systems



Early Childhood Systems Working Group

Program Characteristics

| | |
|--|---|
| CHILD AGE (0-3, 0-5, 0-21, etc.) Lifespan Considerations | DIAGNOSIS OR DISABILITY |
| INCOME/ FEDERAL POVERTY LEVEL | TYPE OF SERVICE OR SUPPORT |
| DEGREE OR LEVEL OF NEED | POPULATIONS OF SPECIAL CONSIDERATION |

Early Childhood System Components

Visibility

- Resource & Referral
- Public Awareness
- Child Find

Quality Services

- Training & TA
- Evidence-based Practices
- Personnel Standards

Eligibility

- Definition
- Screening
- Evaluation & Assessment

Service Delivery

- Plan of Care
- Services
- Coordination
- Transition

CQI

- Supervision & Monitoring
- Data Collection, Analysis and Reporting

Problem Solving

- Dispute Mechanism
- Consumer & Provider Rights

Financial Resources

- Funding Sources
- Contracts
- Rates & Payments



System Framework: Personnel Workforce



So – How Do We Pay For This?

- At the height of the recession, states moved funding from personnel development to support direct service provision.
- With limited new funding, the imperative is to leverage resources across early childhood systems

Develop Funding Matrix

| | IDEA Part C | IDEA Part B | IDEA Part D | Title I | Title V | Title XXI | Head Start |
|----------------------------|----------------|----------------|----------------|---------|---------|-----------|---------------|
| Central Directory | | | | | | | |
| Data Collection | | | | | | | |
| ICC | | | | | | | |
| Procedural Safeguards | | | | | | | |
| Supervision and Monitoring | | | | | | | |
| Financial Administration | | | | | | | |
| State Administration | | | | | | | |
| Training and TA System | | | | | | | |
| Outcome Evaluation | | | | | | | |
| Family Support | | | | | | | |
| Interagency Coordination | | | | | | | |
| Transition | | | | | | | |

Finance Strategically...

- **There will never be enough funds if we operate as programs.**
- Establish the goal of a shared comprehensive early childhood system of personnel development
- Leverage federal, state, local and private funding across systems.
- Craft win-win situations for all partners