

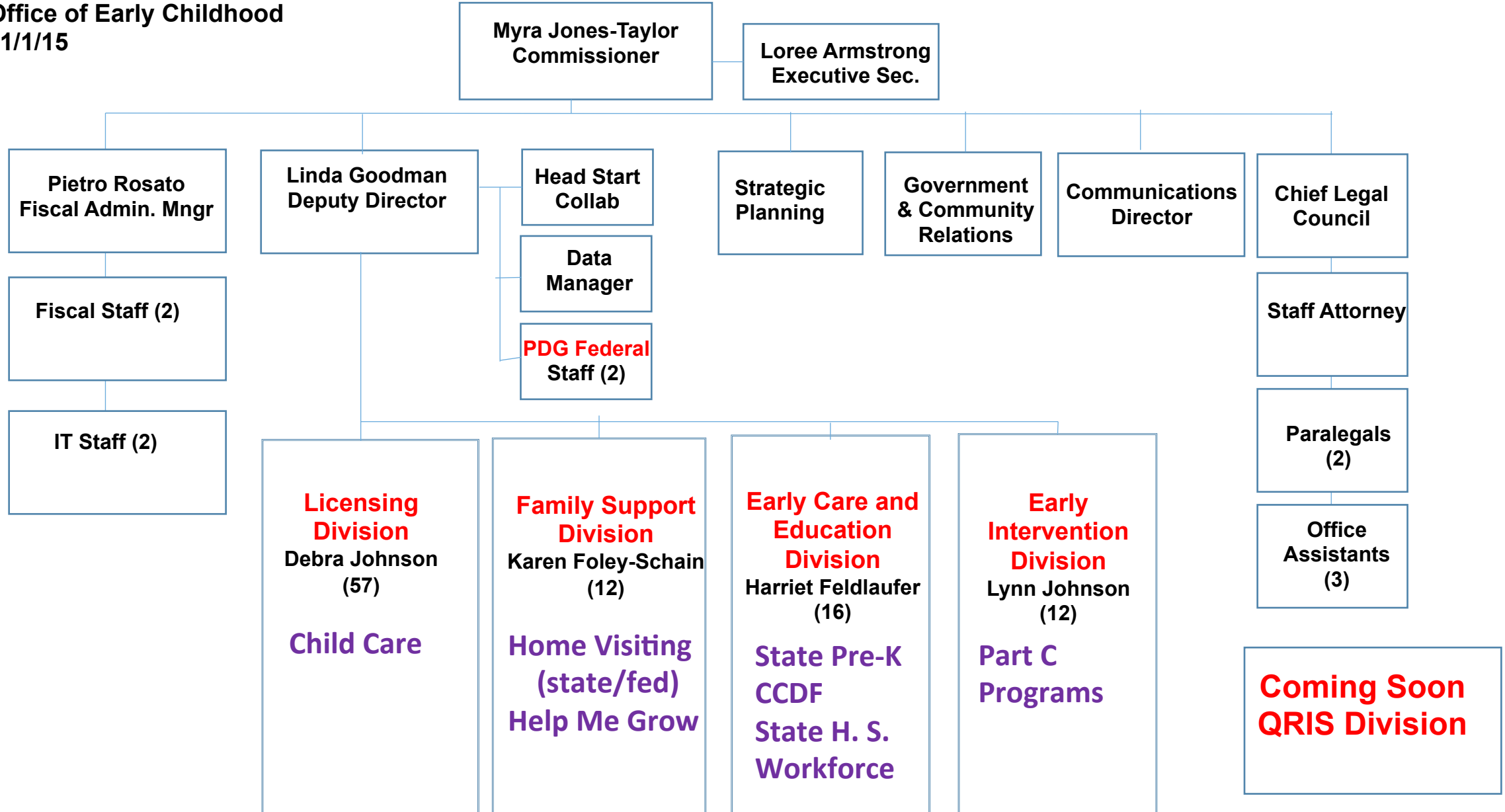


Connecticut Office of
Early Childhood

WHAT'S IN THE CONNECTICUT OFFICE OF EARLY CHILDHOOD?

State Pre-K	School Readiness-Priority and Competitive Communities Subsidized Child Care Centers (includes infant/toddler, school age) Smart Start Preschool Development Grant Capitol Improvement Bond Funds State Head Start funding Head Start Collaboration Office Early Learning and Development Standards Kindergarten Entry Inventory
Child Care	Care4Kids – subsidy administered through a contract with United Way Resource and Referral – Child Care 211 administered through a contract with United Way Licensing – Child Care Centers and Family Child Care Homes
Data	Early Childhood Information System
Quality	Quality Improvement System under development through a contract with United Way
Workforce	Workforce Registry Scholarships Core Knowledge and Competencies under development
Family Support	Home Visiting (Nurturing Family Network, MIECHV-funded programs) Help Me Grow Family Empowerment, Family School Connections (small programs) Healthy Start (dollars transferred from Dept. of Social Services)
Early Intervention	Birth to Three – IDEA Part C

Office of Early Childhood
11/1/15



What Opportunities has this presented?

- Chairing the Early Childhood Cabinet – recent work on families without homes – policy changes across divisions and agencies.
- **New Preschool Development Grant**
- Writing new CCDF plan – changes across licensing, quality, training, state pre-K, child care subsidy. Statutory changes, regulatory changes
- **Interest by funders**
- Cross-divisional work
- **Inclusion of children with disabilities across divisions**
- Collaborations with other state agencies
 - DCF – joint investigations, co-funding of home visiting, COP
 - DOC – incarcerated parents
 - DSS – child care subsidy/TANF, homeless, poverty

What Challenges Remain?

- The intersection of the OEC and the Dept. of Education and LEAs, charter schools, and magnet schools when it comes to 3 and 4 year olds receiving pre-k.
- Inclusion requirements of PDG and State Pre-K
- Public/Private Partnerships
- Structure for state-local governance/planning/engagement
- Development of a QRIS and Core Knowledge and Competencies for all early childhood professionals serving children ages Birth – Five.